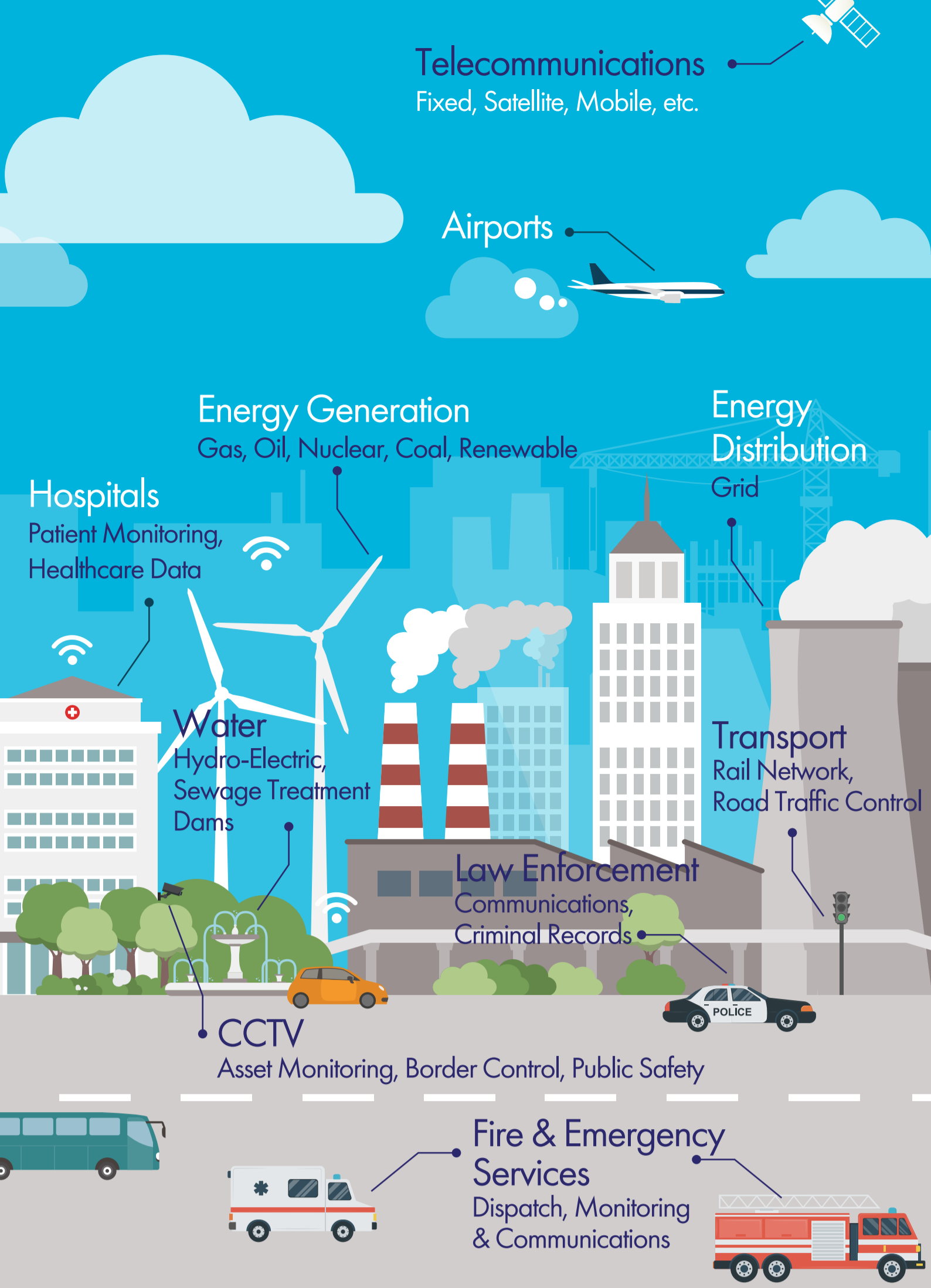
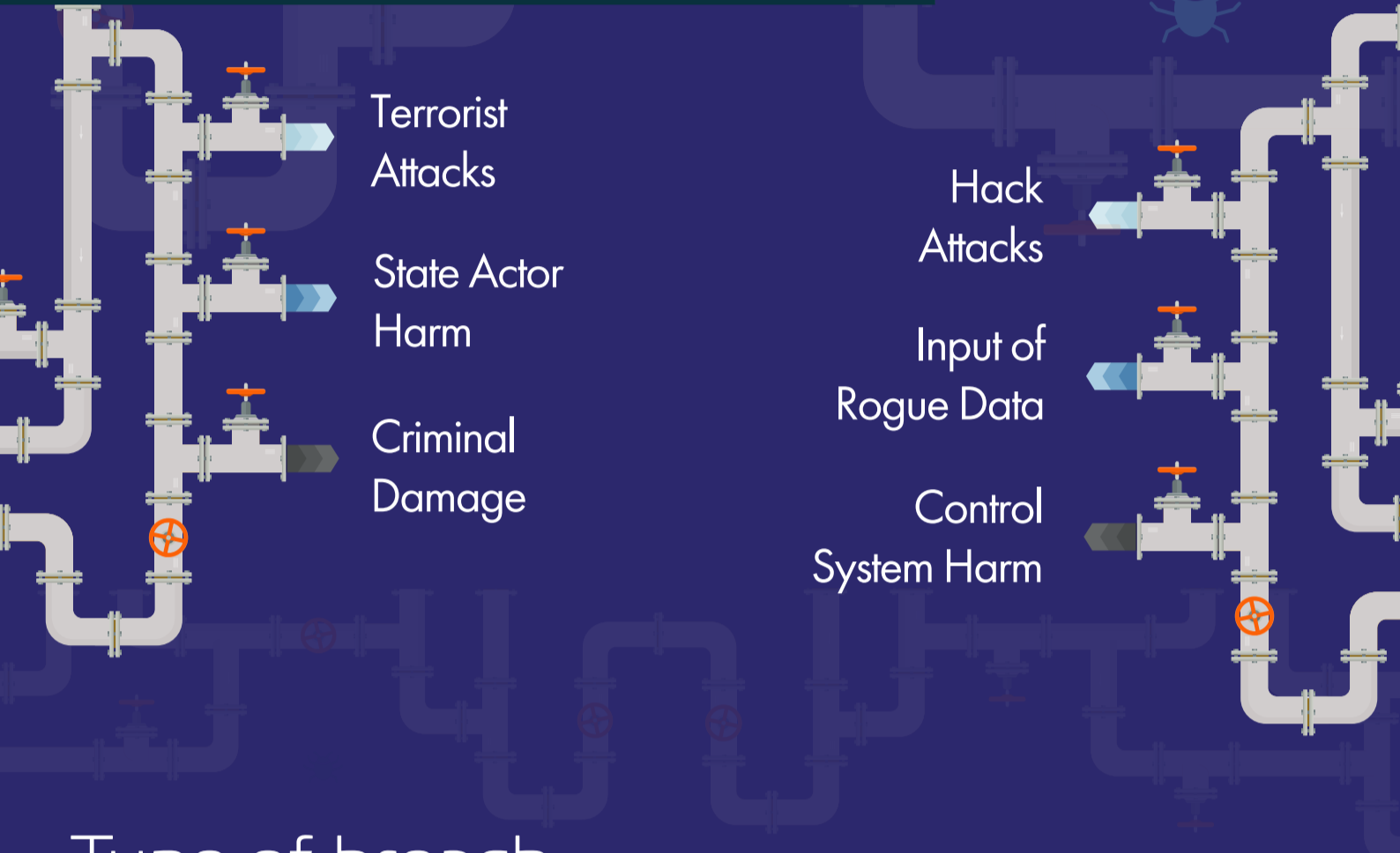


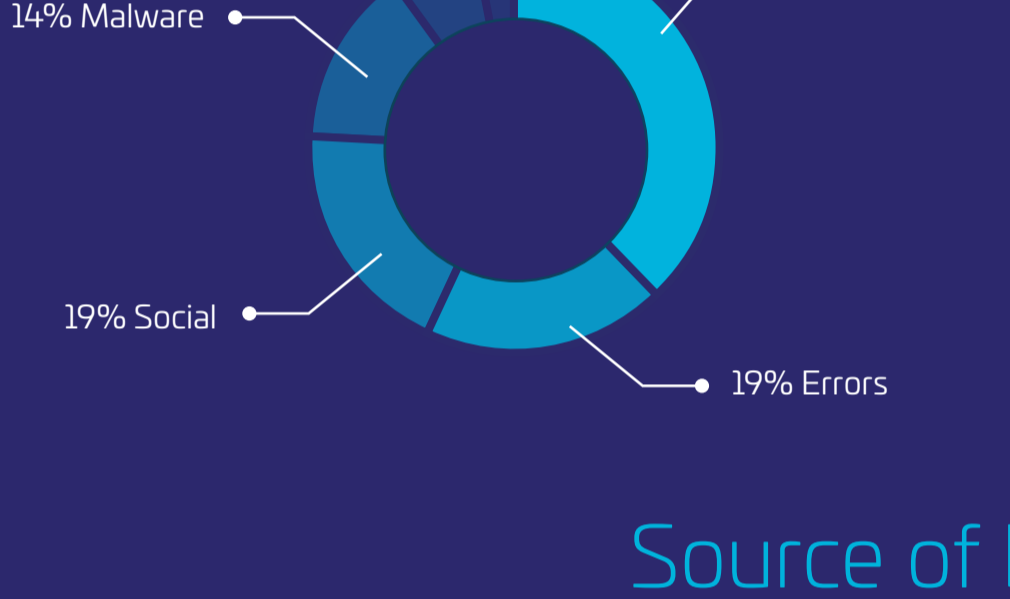
Protecting Critical National Infrastructure



The Threat Landscape



Type of breach



Source of breach



Notable Cyber-Attacks



UK and Ireland energy networks suffer sustained cyber-attack.



Wolf Creek Nuclear Power Station suffers spear phishing attack.



Kiev power grid SCADA network hacked, resulting in blackouts.



WannaCry, Patya and NotPetya ransomware attacks.

Consequences



Economic Damage

Citizen Harm



Business Disruption

National Services Damage & Disruption



Solutions:



CN Series
Certified High-assurance & Hardware Encryption

Core IT & Network Infrastructure



CV Series
Strong & effective Virtualized encryption

Large-scale Virtualized WAN