

1) Install Luna Client software (v5.4.1)

This is the complete client package for the Luna SA 5.4.1

Name	Publisher	Install...	Size	Version
SafeNet Luna Client 5.4.1	SafeNet, Inc.	5/26/2014	16.6 MB	5.4.1

2) Install Luna Client software (v5.4.2)

This package includes only a patched version of the "cryptoki" library along with a patch description.

cryptoki.dll	4/25/2014 11:39 AM	Application extens...	1,844 KB
cryptoki.dll.sig	4/25/2014 11:39 AM	SIG File	1 KB

3) Configure Luna SA client (NTLS setup)

```
C:\Program Files\SafeNet\LunaClient>vtl list
Server: 172.20.16.222 HTL required: no

C:\Program Files\SafeNet\LunaClient>vtl verify

The following Luna SA Slots/Partitions were found:

Slot      Serial #      Label
====      =====      =====
  1        153133004     pm

C:\Program Files\SafeNet\LunaClient>cmu list
Please enter password for token in slot 1 : *****

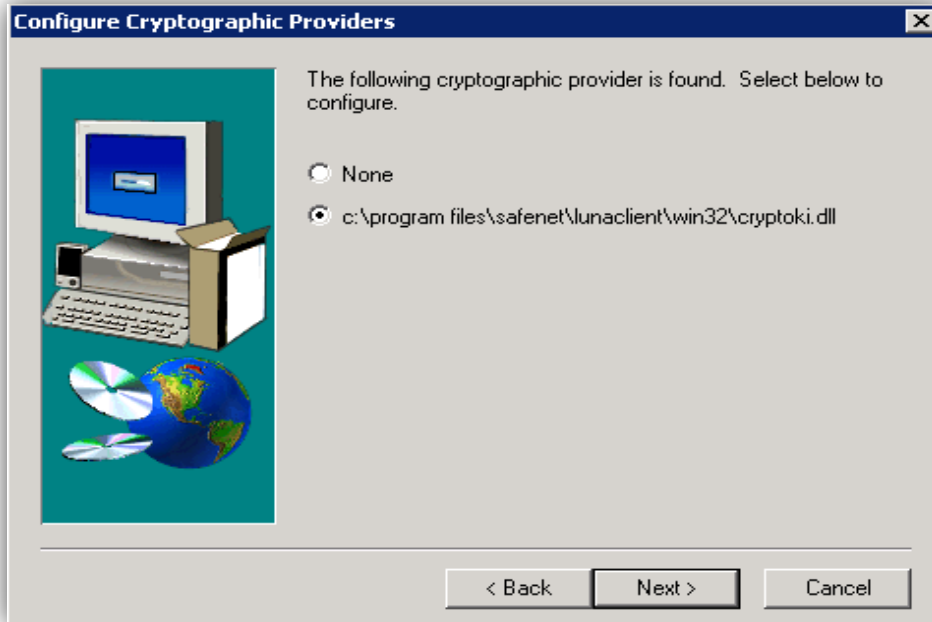
C:\Program Files\SafeNet\LunaClient>
C:\Program Files\SafeNet\LunaClient>_
```

4) Create a soft link pointing to the LunaClient directory using the following command:

mklink /d "\\Program Files\LunaG5" "\\Program Files\SafeNet\LunaClient"

```
C:\Program Files\SafeNet\LunaClient>mklink /d "\\Program Files\LunaG5" "\\Program Files\SafeNet\LunaClient"
symbolic link created for \Program Files\LunaG5 <<===>> \Program Files\SafeNet\LunaClient
```

- 5) Run RSA software (Selecting the "cryptoki.dll" from "C:\Program Files\SafeNet\LunaClient\win32")



- 6) After successful install, 34 objects are created on the partition

```
C:\Program Files\SafeNet\LunaClient>cmu li
Please enter password for token in slot 1 : *****
handle=75      label=
handle=76      label=
handle=79      label=
handle=80      label=
handle=83      label=
handle=84      label=
handle=87      label=
handle=88      label=
handle=91      label=
handle=92      label=
handle=95      label=
handle=96      label=
handle=99      label=
handle=100     label=
handle=103     label=
handle=104     label=
handle=107     label=
handle=108     label=
handle=111     label=
handle=112     label=
handle=115     label=
handle=116     label=
handle=119     label=
handle=120     label=
handle=123     label=
handle=124     label=
handle=127     label=
handle=128     label=
handle=131     label=
handle=132     label=
handle=135     label=
handle=136     label=
handle=139     label=
handle=149     label=
```

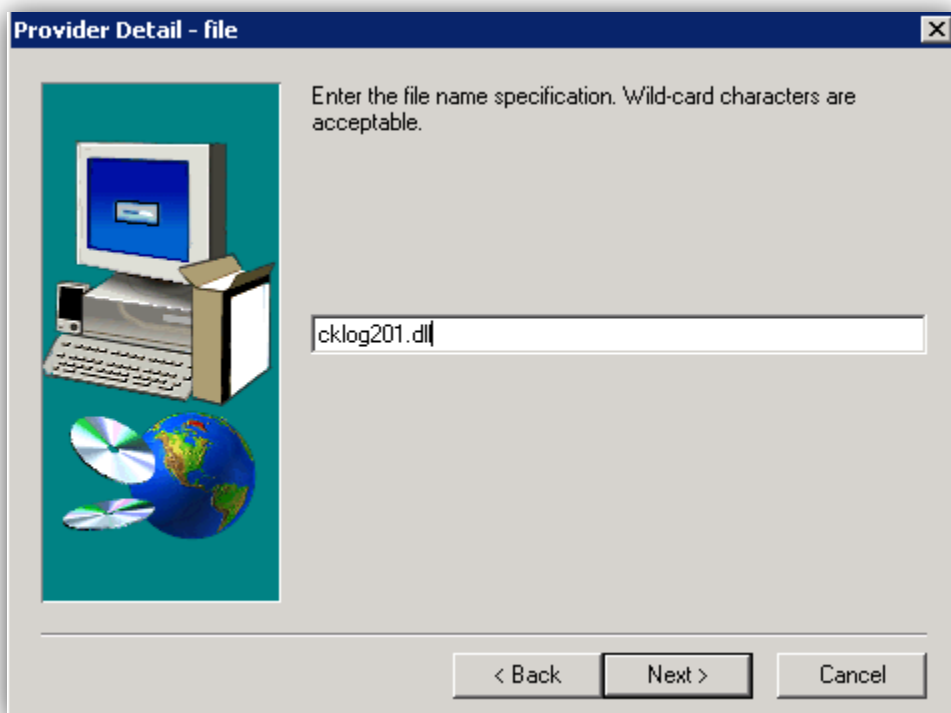
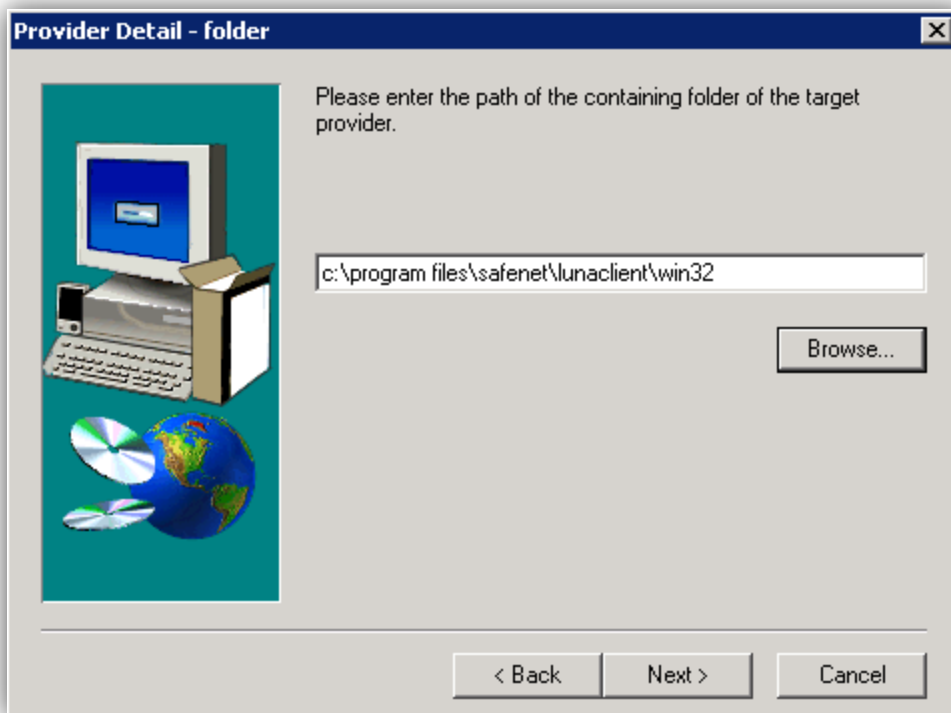
Enabling CKLOGS

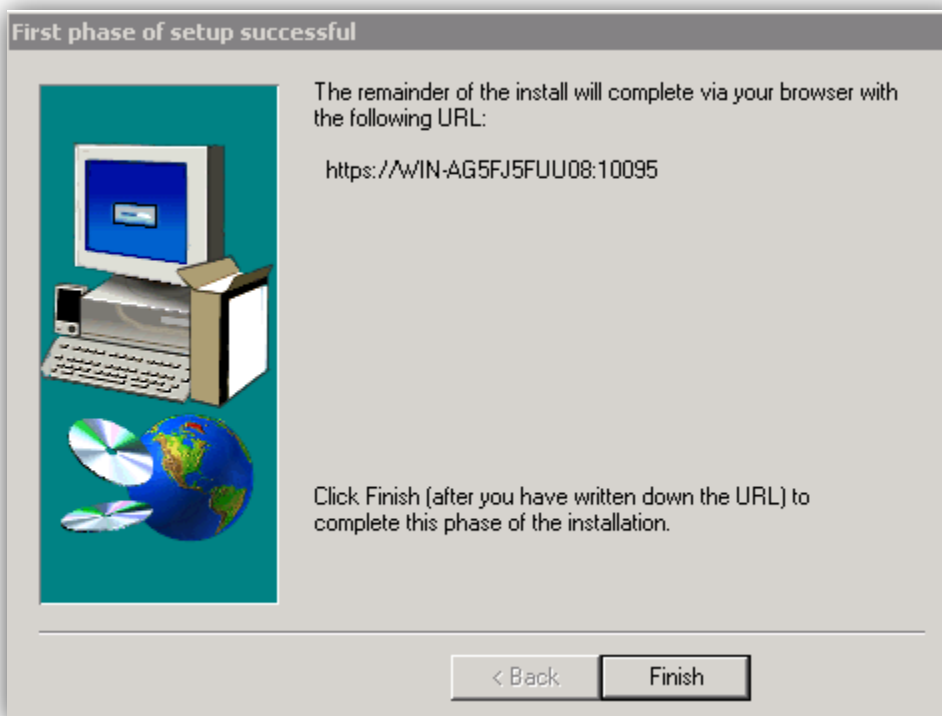
- 1) Edit your 'cryptoki.ini' file located in "C:\Program Files\SafeNet\LunaClient " and add the following entries:

```
[Chrystoki2]
LibNT=C:\Program Files\SafeNet\LunaClient\win32\cklog201.dll
[CkLog2]
LibNT=c:\Program Files\SafeNet\LunaClient\win32\cryptoki.dll
Enabled=1
File=C:\Users\Public\cklog2.txt
Error=C:\Users\Public\error2.txt
NewFormat=1
LoggingMask=ALL_FUNC
[Luna]
```

- 2) Select the "cklog201.dll" library when selecting a cryptographic provider.







Software:

- 1) Luna Client software (Downloadable from our support portal)

DOW3230 LunaHSM 5.4.1 Client
DOW3260 LunaHSM 5.4.2 Client (Library Patch)

- 2) Luna SA appliance SW v5.4.2 and FW v6.2.1 (FIPS)

```
[local_host] lunash:>hsm show

Appliance Details:
=====
Software Version:          5.4.2-2

HSM Details:
=====
HSM Label:                 SA5_127
Serial #:                  153133
Firmware:                  6.2.1
Rollback Version:         Unavailable
Hardware Model:           Luna K6
Authentication Method:    PED keys
HSM Admin login status:   Not Logged In
HSM Admin login attempts left: 3 before HSM zeroization!
RPV Initialized:          Yes
Audit Role Initialized:   Not supported
Remote Login Initialized: No
Manually Zeroized:        No

Partitions created on HSM:
=====
Partition: 153133004,      Name: pm
```

- 3) RSA Certificate Manager v6.9 (Build 553)

SafeNet Luna Client 5.4.1	SafeNet, Inc.	5/26/2014
RSA Secure Logging Server 6.9		6/4/2014
RSA CMP Server 6.9 build 553		6/4/2014
RSA CM Install Web Server		6/4/2014
RSA CM Install Directory Server		6/4/2014
RSA CM 6.9 build 553 (Secure Directory)		6/4/2014
RSA CM 6.9 build 553 (Administration)		6/4/2014
Microsoft Visual C++ 2005 Redistributable	Microsoft Corporation	5/17/2014